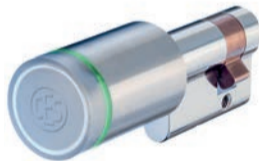
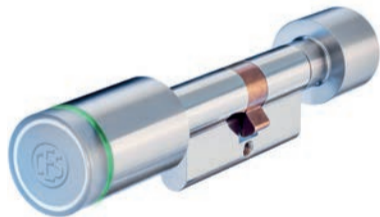


CES OMEGA FLEX

Elektronik-Zylinder

Electronic cylinder Cylindre électronique Cilindro elettronico Elektronische cilinder Cilindros electrónicos



BRO1093 VE

Technische Änderungen ohne Vorankündigung vorbehalten.

Subject to changes without notice.

Technische wijzigingen zonder voorafgaande aankondiging voorbehouden.

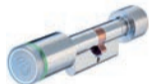
Sous réserve de modifications techniques sans annonce préalable.

Salvo modifiche tecniche senza preavviso.

Sujeto a cambios técnicos sin previo aviso.

Doppelknopfzylinder

Double knob cylinder
Cylindre à double bouton
Cilindro a doppio pomolo
Dubbele knopcilinder
Cilindro de doble pomo



F815DK-x / F915DK-x
 F815DK-x-AP / F915DK-x-AP
 F815DK-x-GS / F915DK-x-GS

Doppelknopfzylinder (CH)

F615DK-x
 F615DK-x-AP
 F615DK-x-GS

Blindzylinder

Dummy cylinder
Cylindre borgne
Cilindro con lato cieco
Blindcilinder
Cilindro de lado ciego



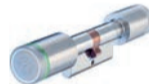
F802/13-x / F902/13-x
 F802/13-x-AP / F902/13-x-AP
 F802/13-x-GS / F902/13-x-GS

Blindzylinder (CH)

F602/13-x
 F602/13-x-AP
 F602/13-x-GS

Dualzylinder

Dual cylinder
Double cylinder
Cilindro con doppia unità di lettura
Dubbelzijdig lezende knopcilinder
Cilindro dual



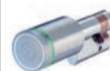
F815DK-x-II / F915DK-x-II

Dualzylinder (CH)

F615DK-x-II

Halbzylinder

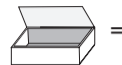
Half cylinder
Demi-cylindre
Mezzo cilindro
Halve cilinder
Medio cilindro



F815DK-x-½ / F915DK-x-½

Halbzylinder (CH)

F615DK-x-½



=

1x



1x



1x

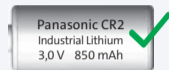
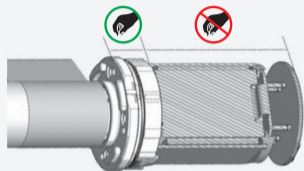




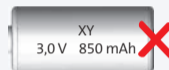
www.ces.eu



ESD



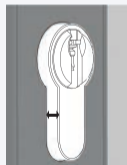
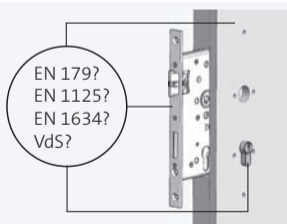
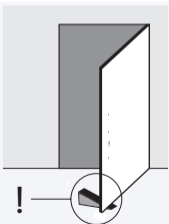
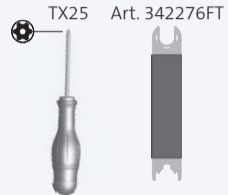
Panasonic CR2
Industrial Lithium
3,0V 850 mAh



XY
3,0V 850mAh



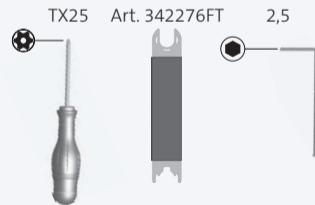
GRS



max. 3 mm

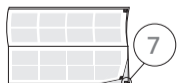


max. 2 mm



Doppelknopfzylinder

Double knob cylinder / Cylindre à double bouton / Cilindro a doppio pomolo / Dubbele knopcilinder / Cilindro de doble pomo

**Blindzylinder**

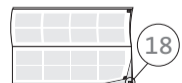
Dummy cylinder / Cylindre borgne / Cilindro con lato cieco / Blindcilinder / Cilindro de lado ciego

**Dualzylinder**

Dual cylinder / Double cylinder / Cilindro con doppia unità di lettura / / Dubbelzijdig lezende knopcilinder / Cilindro dual

**Halbzylinder**

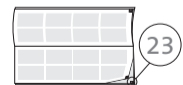
Half cylinder / Demi-cylindre / Mezzo cilindro / Halve cilinder / Medio cilindro

**Administration**

*Administration
Administration
Amministratozione
Administratie
Administración*

**Tür öffnen**

*Open door
Porte ouverte
Aprire
Deur openen
Abrir puerta*



Montage Doppelknopfzylinder

Assembly double knob cylinder
Assemblage cylindre à double bouton
Assemblaggio cilindro a doppio pomolo
Montage dubbele knopcilinder
Montaje cilindro de doble pomo



Möglichkeit 1: Montage von außen (Mechanik-Knauf wird demontiert)

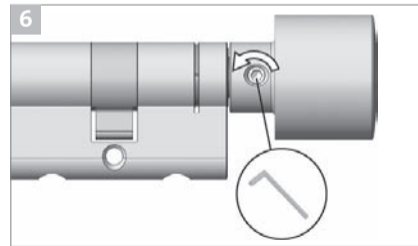
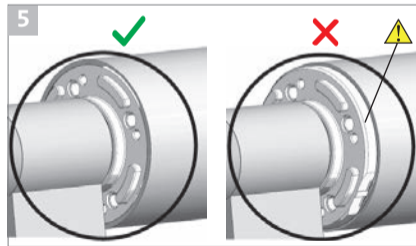
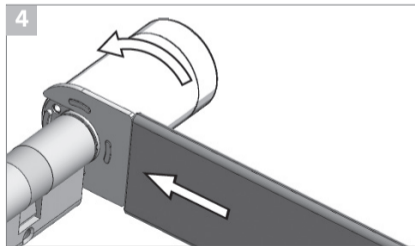
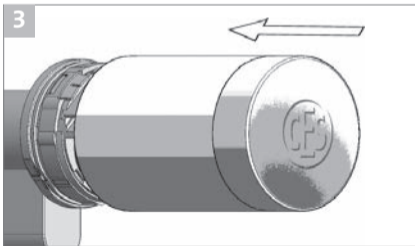
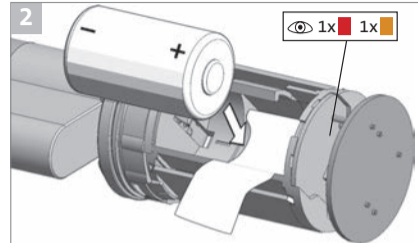
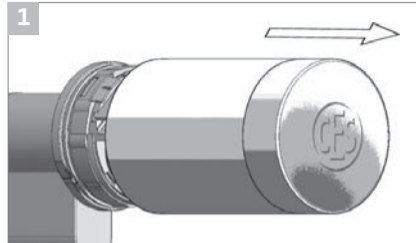
Method 1: Assembly from outer side (mechanical knob has to be disassembled)

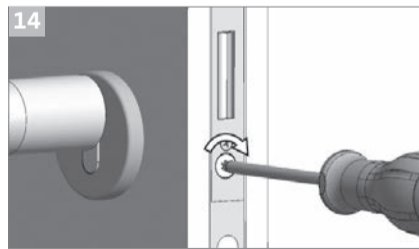
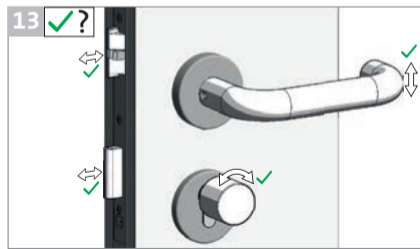
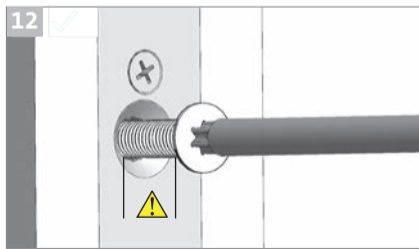
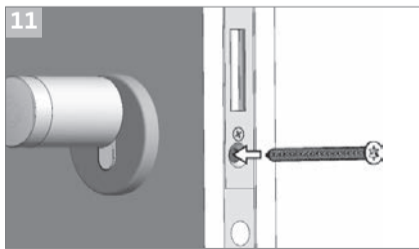
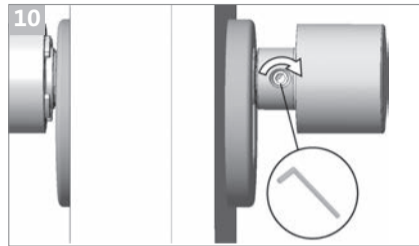
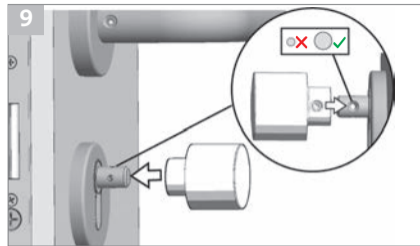
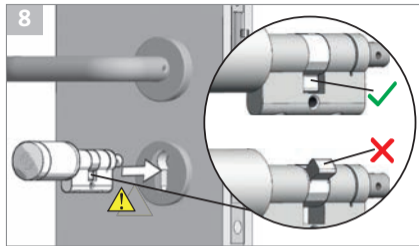
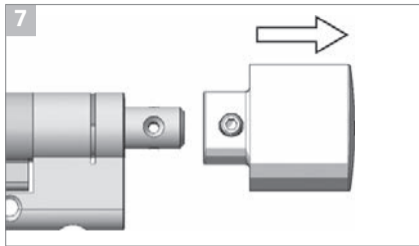
Possibilità 1: Montage de l'extérieure (bouton mécanique sera démonté)

Metodo 1: Montaggio dal lato esterno (è necessario smontare il pomolo meccanico)

Mogelijkheid 1: Montage vanaf de buitenzijde (mechanische knop demonteren)

Opción 1: Montaje desde el exterior (desmontando el pomo mecánico)





Montage Doppelknopfzylinder

Assembly double knob cylinder

Assemblage cylindre à double bouton

Assemblaggio cilindro a doppio pomolo

Montage dubbele knopcilinder

Montaje cilindro de doble pomo



Möglichkeit 2: Montage von innen (Elektronik-Knauf wird demontiert)

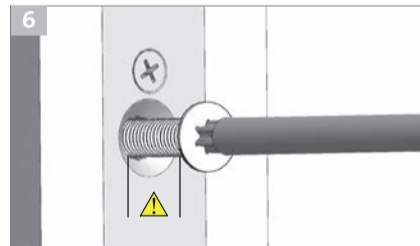
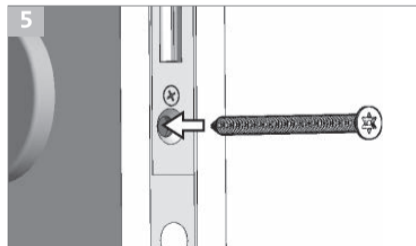
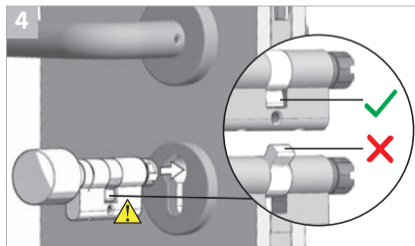
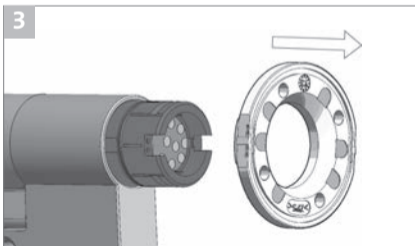
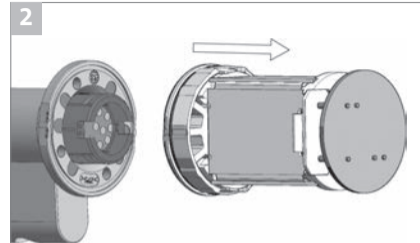
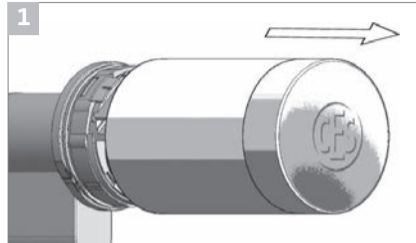
Method 2: Assembly from the inner side (electronic knob has to be disassembled)

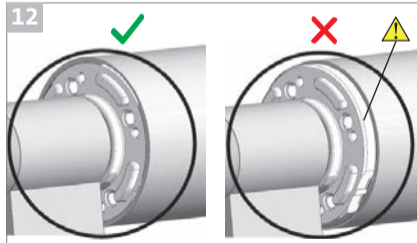
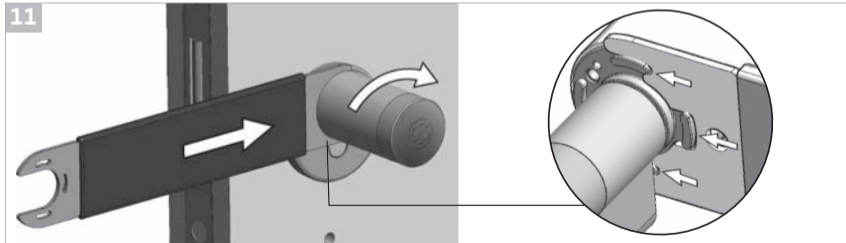
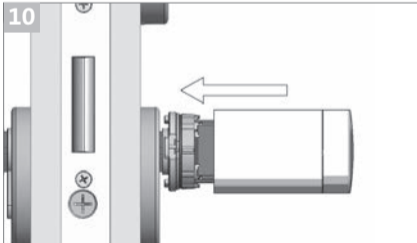
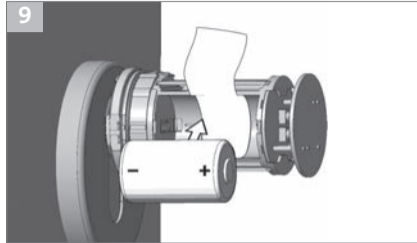
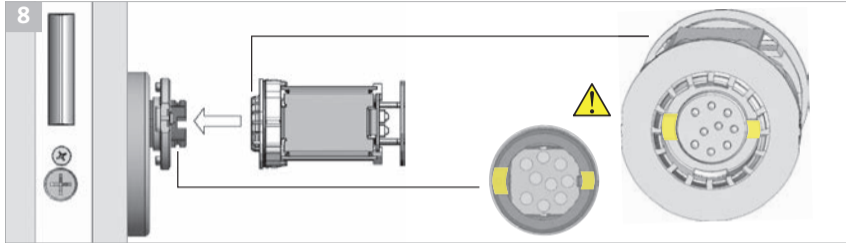
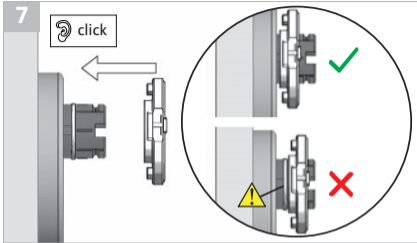
Possibilità 2: Montage de l'intérieure (bouton électronique sera démonté)

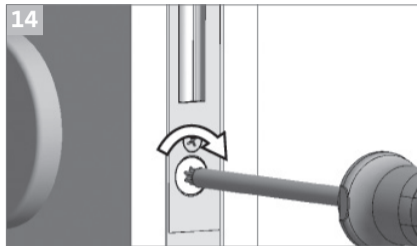
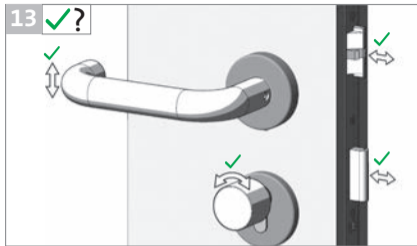
Metodo 2: Montaggio dal lato interno (è necessario smontare il pomolo elettronico)

Mogelijkheid 2: Montage vanaf de binnenzijde (mechanische knop demonteren)

Opción 2: Montaje desde el interior (desmontando el cilindro electrónico)

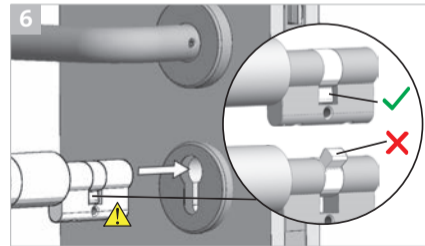
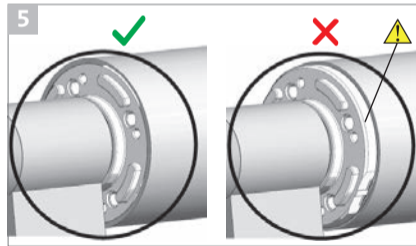
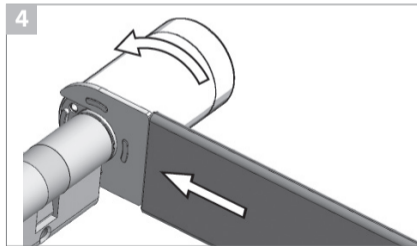
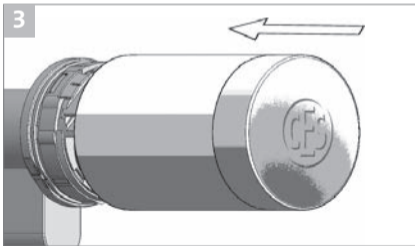
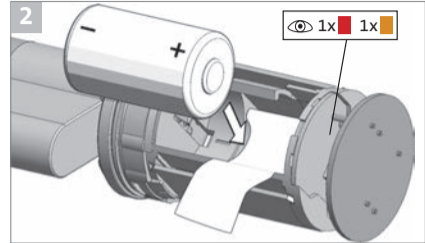
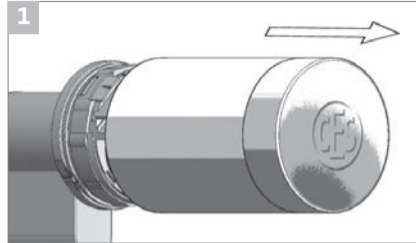
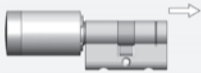


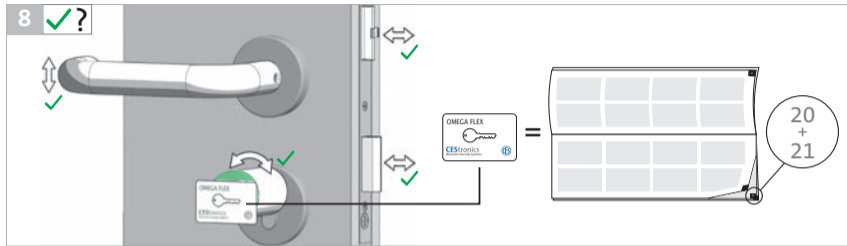
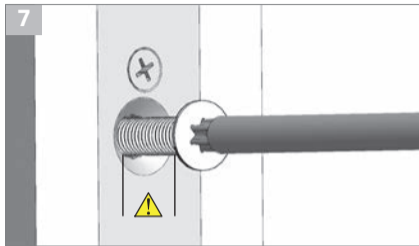




Montage Blindzylinder
 Assembly dummy cylinder
 Assemblage cylindre borgne
 Assemblaggio cilindro con lato cieco
 Montage blindcylinder
 Montaje cilindro de lado ciego

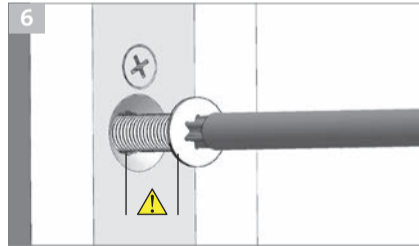
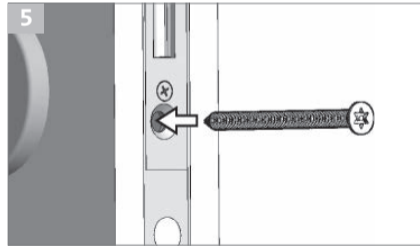
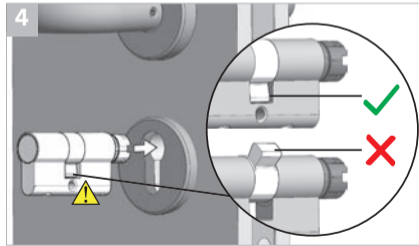
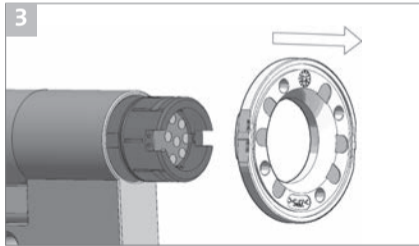
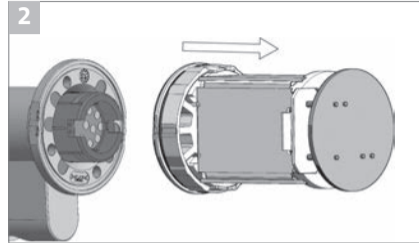
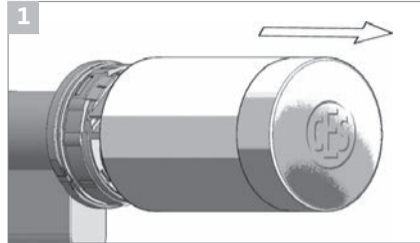
Möglichkeit 1: Montage von außen (Elektronik-Knauf wird nicht demontiert)
 Method 1: Assembly from the outer side (electronic knob does not have to be disassembled)
 Possibilità 1: Montage de l'extérieur (bouton électronique ne sera pas démonté)
 Metodo 1: Montaggio dal lato esterno (non è necessario smontare il pomolo elettronico)
 Mogelijkheid 1: Montage vanaf de buitenzijde (elektronische knop niet demonteren)
 Opción 1: Montaje desde el exterior (sin desmontar el cilindro electrónico)

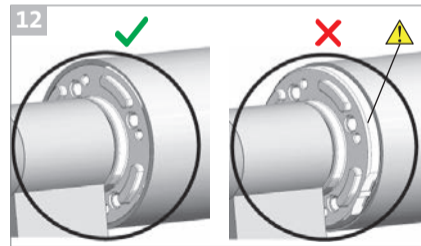
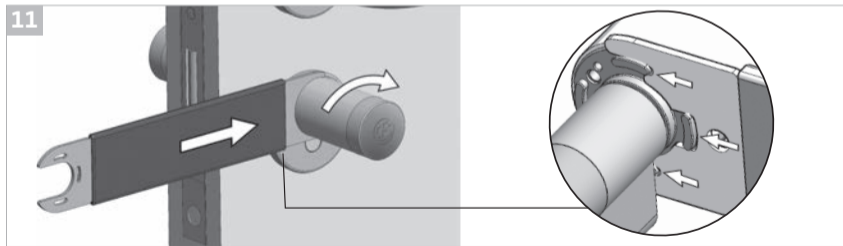
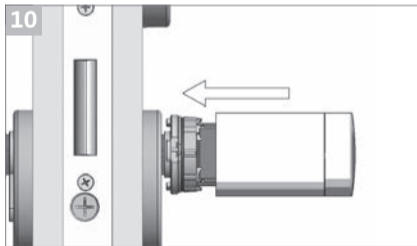
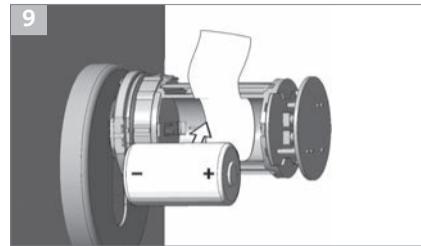
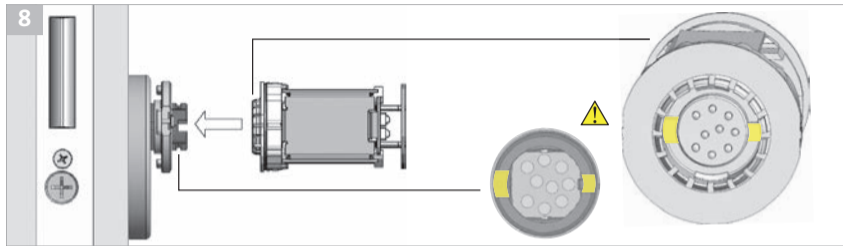
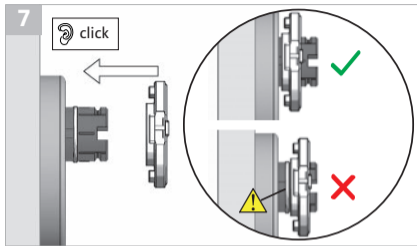


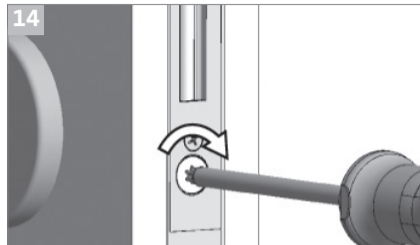
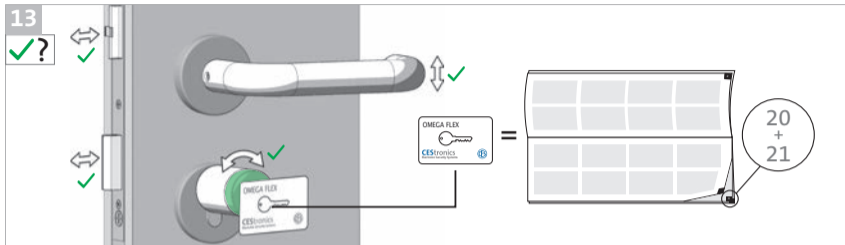


Montage Blindzylinder
 Assembly dummy cylinder
 Assemblage cylindre borgne
 Assemblaggio cilindro con lato cieco
 Montage blindcylinder
 Montaje cilindro de lado ciego

Möglichkeit 2: Montage von innen (Elektronik-Knauf wird demontiert)
 Method 2: Assembly from the inner side (electronic knob has to be disassembled)
 Possibilité 2: Montage de l'intérieure (bouton électronique sera démonté)
 Metodo 2: Montaggio dal lato interno (è necessario smontare il pomolo elettronico)
 Mogelijkheid 2: Montage vanaf de binnenzijde (mechanische knop demonteren)
 Opción 2: Montaje desde el interior (desmontando el cilindro electrónico)







Montage Dualzylinder

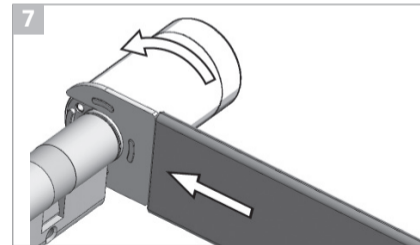
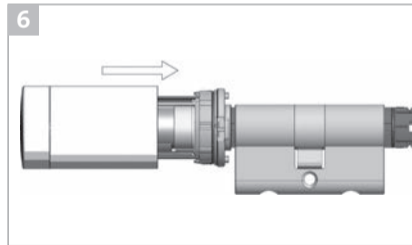
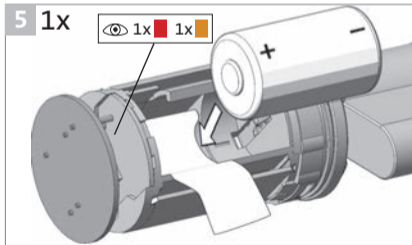
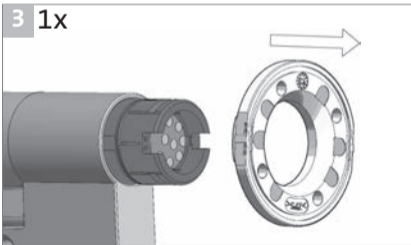
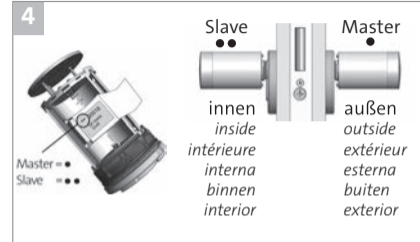
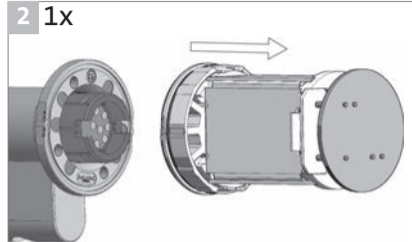
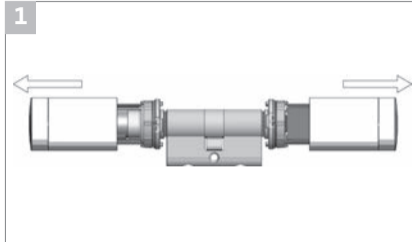
Assembly dual cylinder

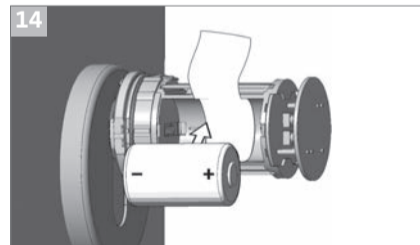
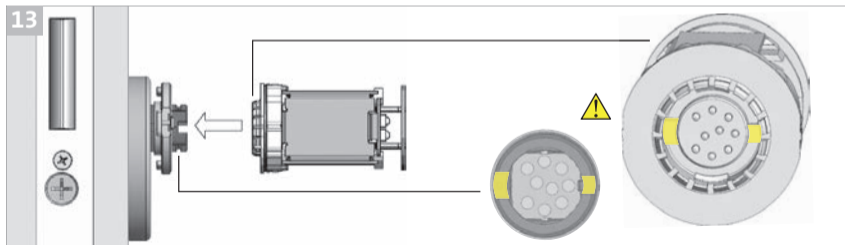
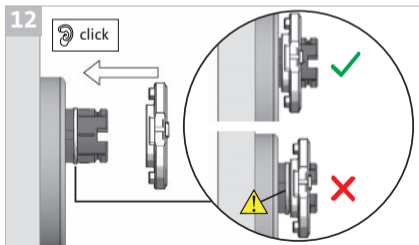
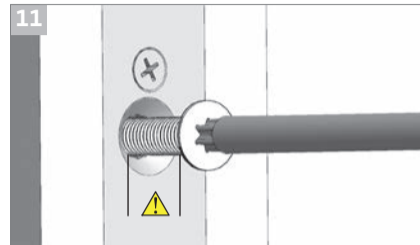
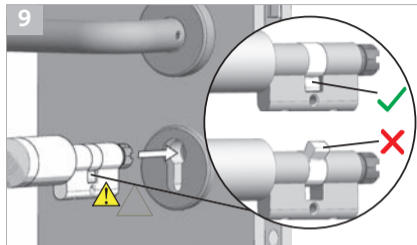
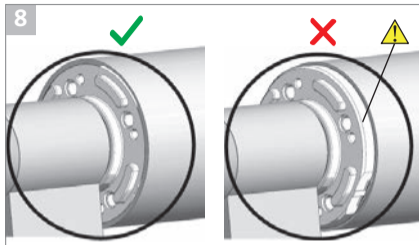
Assemblage double cylinder

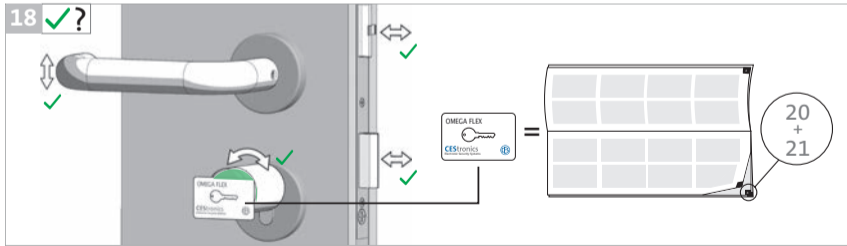
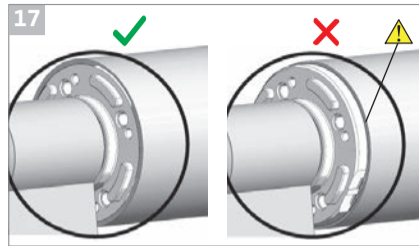
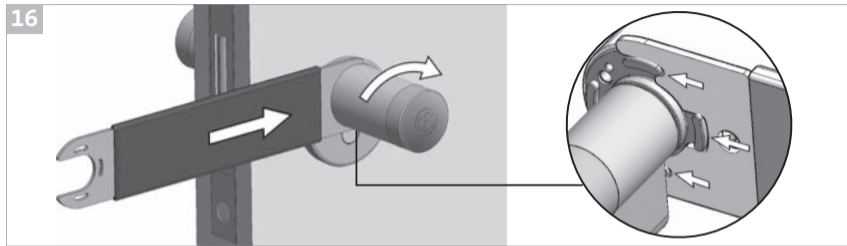
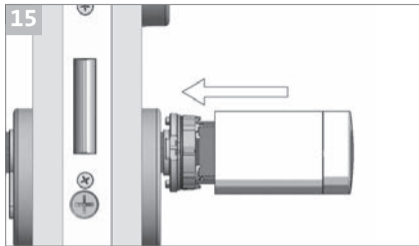
Assemblaggio cilindro con doppia unità di lettura

Montage dubbelzijdig lezende knopcilinder

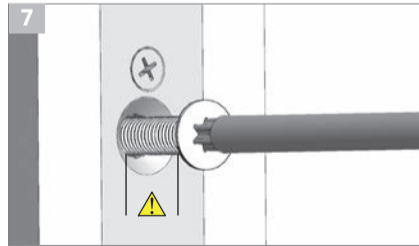
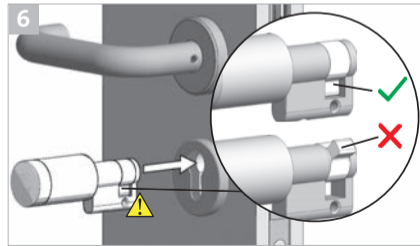
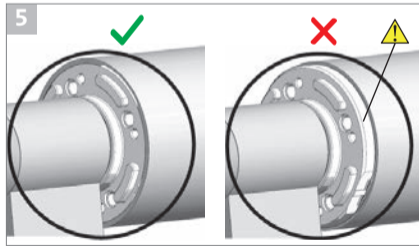
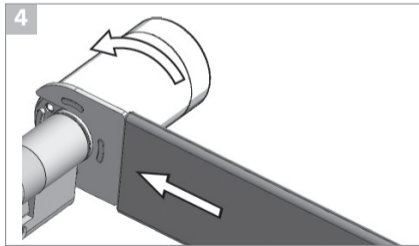
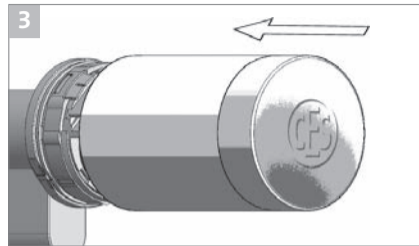
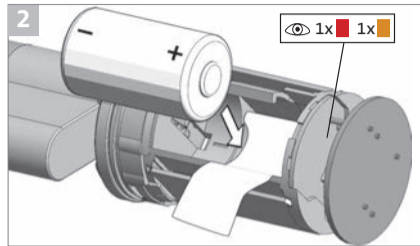
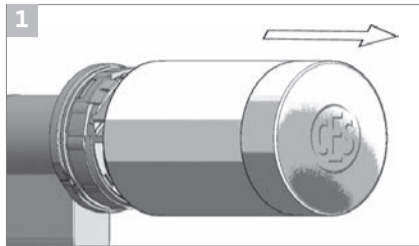
Montaje cilindro de doble pomo

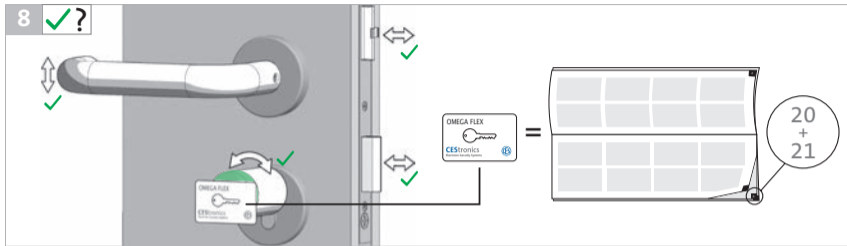






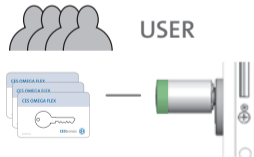
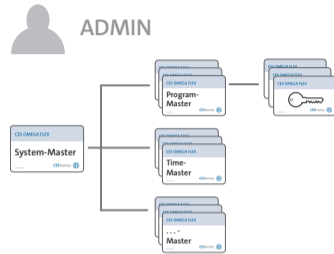
Montage Halbzylinder
Assembly half cylinder
Assemblage demi-cylindre
Assemblaggio mezzo cilindro
Montage halve cilinder

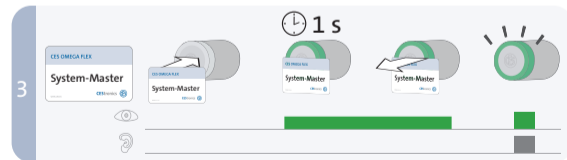
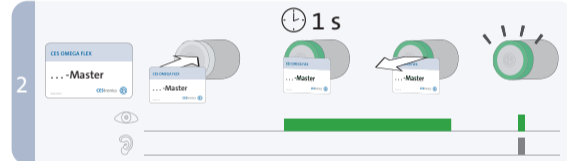
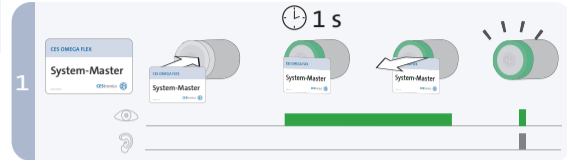


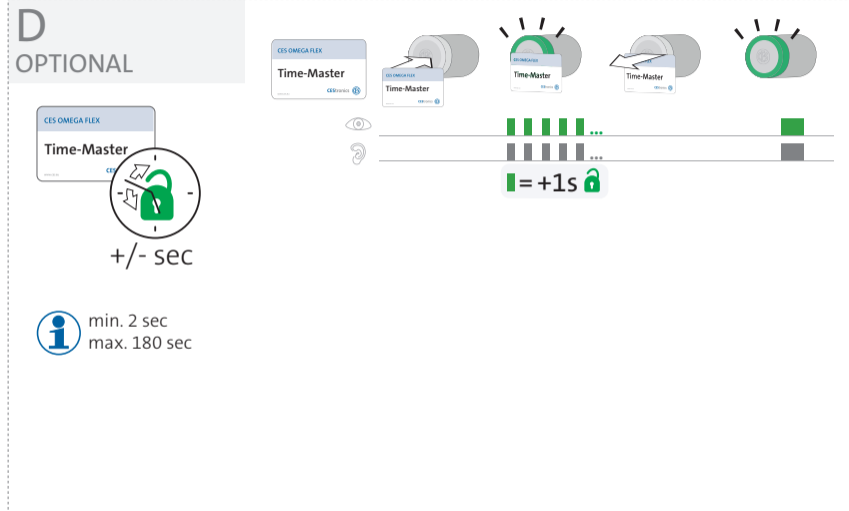
Administration

Administration
Administration
Amministrare
Administratie
Administración

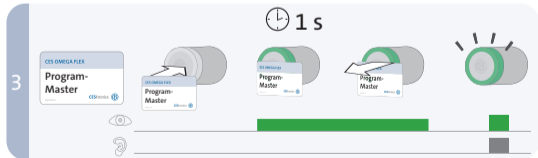
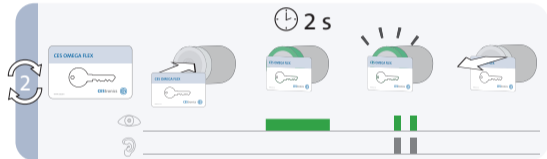
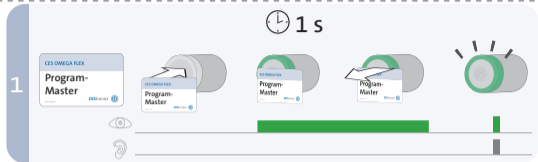
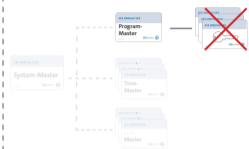


A

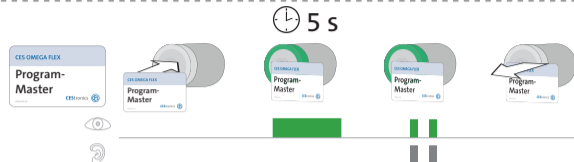
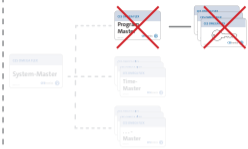




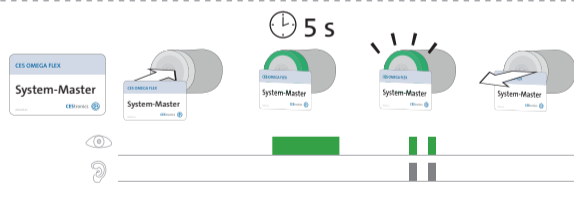
DELETE



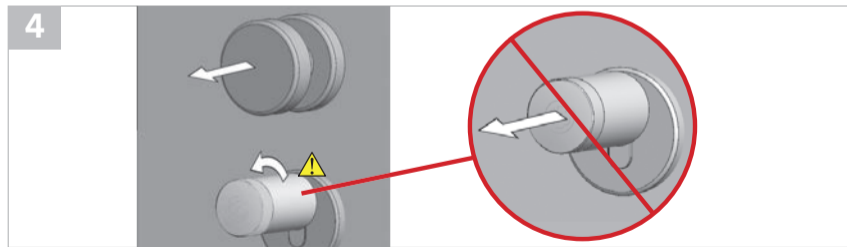
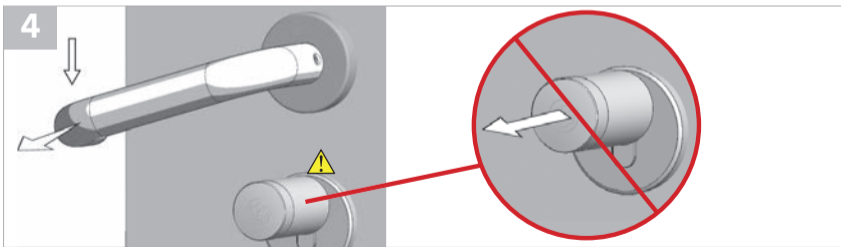
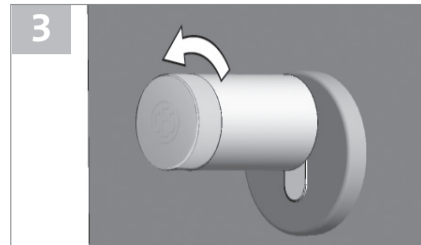
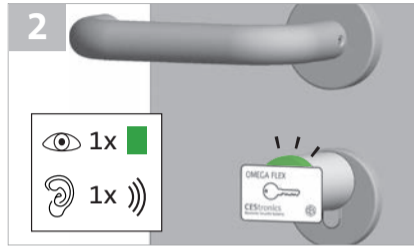
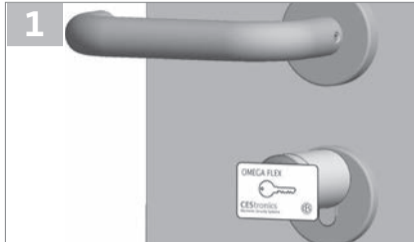
DELETE



RESET



Tür öffnen
Open door
Porte ouverte
Aprire
Deur openen
Abrir puerta





Teaming up for security

since 1840

C.Ed. Schulte GmbH Zylinderschlossfabrik

Friedrichstraße 243

D-42551 Velbert

☎ +49 2051 204 0

☎ +49 2051 204 229

@ info@ces.eu

CESnederland B.V.

Lage Brink 9

NL-7317 BD Apeldoorn

☎ +31 55-52 66 89 0

☎ +31 55-52 66 89 9

@ info@ces.eu

CESfrance SARL

8 Impasse Charles Petit

F-75011 Paris

☎ +33 1 44 87 07 56

☎ +33 1 43 07 35 78

@ infofr@ces.eu

CESitalia srl

V. d. vecchia Fondamenta, 4

Straße d. A. Gründungen 4

I-39044 Egna / Neumarkt (BZ)

☎ +39 0471 812 294

☎ +39 0471 812 294

@ info@it.ces.eu

CESrom srl.

Str. Metalurgistilor 3 D

RO-550137 Sibiu

☎ +40 269-206 00 2

☎ +40 269-206 00 5

@ info@ro.ces.eu

United Kingdom

CES Security Solutions Ltd

Unit 4 Kendon Business Park

Maritime Close, Medway City Estate

Rochester, Kent ME2 4JF

☎ +44 1 634713369

☎ +44 1 634786833

@ info@uk.ces.eu

Middle East

A.G.P. Advanced German Products LLC

PO Box 102761

UAE Dubai

☎ +971 4 885 7050

+971 4 369 7051

☎ +971 4 390 8935

@ info@agp-dubai.com

Austria

César A. Cárcamo

Büro: Wiener Bundesstrasse 33

A-4050 Traun

☎ +43 660-73 20 311

☎ +43 732-21 00 22 2681

@ office@ces.at

Belgium

LockingSystems

Guy Lambrechts

Van Haeftenlaan 10

BE-2950 Kapellen

☎ +32 497 946267

@ guy.lambrechts@ces.eu

Spain

Benidorm Locks S.L.

Av. Marina Baixa s/n

Partida Torrent

ES-03530 La Nucia, Alicante

☎ +34 96 689 79 79

☎ +34 96 689 79 78

@ info@benidormlocks.com